

1 Applications

The TI062 timer can be used indoors and outdoors to control lighting, motors and block heaters. The timer provides 5 modes of operation:

Mode	Ideal for
Automatic mode	<ul style="list-style-type: none"> indoor and outdoor lights (at set times) swimming pool pumps
Automatic mode with temperature threshold	<ul style="list-style-type: none"> engine block heaters gutter heating cables
Automatic mode with darkness threshold	<ul style="list-style-type: none"> outdoor lighting during the evening
Sunset/sunrise mode	<ul style="list-style-type: none"> outdoor lighting during the night
Manual mode	<ul style="list-style-type: none"> when you do not wish the controlled appliance to turn on or off automatically.

NOTE 1: Suitable for use with outdoor appliances. Store indoors when not in use.

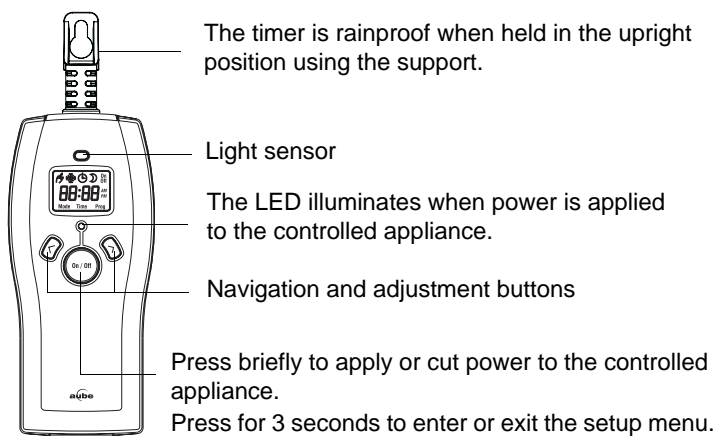
NOTE 2: To reduce the risk of electric shock, the timer has a grounding-type plug, which has a third (grounding) pin. This plug will fit only in a grounding-type outlet. If the plug does not fit in the outlet, contact a qualified electrician to install the proper outlet. Do not modify the plug in any way.

2 First Use

Plug the timer in an electrical outlet before setting it for the first time. The clock flashes to indicate that it must be set*. When the timer has been charged for at least 2 hours, it can be unplugged for several minutes without losing the time. The other settings are saved at all times.

* The clock will still tick even if it is not set. When this happens, the on/off times of the controlled appliance might be shifted.

3 Description of Controls



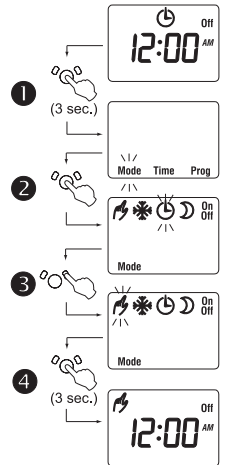
4 Setting the Mode of Operation

You can set the timer in any of the following modes:

- Manual mode
- Automatic mode (default mode)
- Automatic mode with temperature threshold
- Automatic mode with darkness threshold
- Sunset/sunrise mode

To switch mode, use the programming menu. For example, to switch from Automatic mode to Manual mode:

- 1 Hold the **On/Off** button for 3 seconds to enter the menu. The **Mode** menu will flash.
- 2 Press the **On/Off** button briefly. The current mode will flash on the screen.
- 3 Press the **▶** button repeatedly until the desired mode flashes on the screen.
- 4 Hold the **On/Off** button for 3 seconds to exit the menu.



NOTE: The timer automatically returns to its normal display if you do not press any button for 60 seconds.

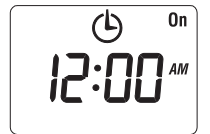
4.1 Manual mode

The timer operates like a regular switch. It applies or cut power to the appliance when you press the **On/Off** button.



4.2 Automatic mode

The timer applies and cuts power to the appliance at the desired times by means of a program. Power is applied at the start of the program and is cut at the end of the program. By default, the program starts at 6:00 pm and ends at 11:00 pm. see section 6 on how to set the start program time and end program time.



4.3 Automatic mode with temperature threshold

When the timer is plugged to an outdoor outlet, this mode is used to activate an appliance such as an engine block heater or gutter heating cables when the temperature drops. Heating starts when both following conditions are met:



- The program has started.
- The temperature threshold is reached (see the different temperature threshold options in the following table). The icon flashes when the threshold is not reached.

See section 6 for program setting and temperature threshold selection.

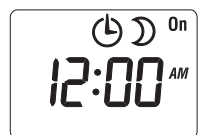
Temperature Threshold	Recommended Applications
-12 °C (10 °F) [default]	gas engine block heaters
-6 °C (21 °F)	diesel engine block heaters
3 °C (37 °F)	gutter heating cables

Heating will stop at the end of the program or when the temperature rises above the threshold by a few degrees. However, heating will resume if the temperature drops again before the end of the program.

CAUTION: Do not use the timer for temperature control applications.

4.4 Automatic mode with darkness threshold

When the timer is plugged to an outlet exposed to daylight, this mode is used to turn lights on at sunset and turn them off at a set time. The lights turn on when both following conditions are met:



- The program has started (see section 6).
- The darkness threshold is reached. The icon flashes when the darkness threshold is not reached.

The lights will turn off at the end of the program.

NOTE: Ensure that the timer is positioned such that the light sensor is pointing to an area that is undisturbed by car lights, outdoor lights, etc.

4.5 Sunset/sunrise mode ☾

When the timer is plugged to an outlet exposed to daylight, this mode is used to turn lights on at sunset and turn them off at sunrise. The lights turn on when the darkness threshold is reached. (The ☾ icon flashes when the darkness threshold is not yet reached.) When the timer will detect light, the lights will turn off.



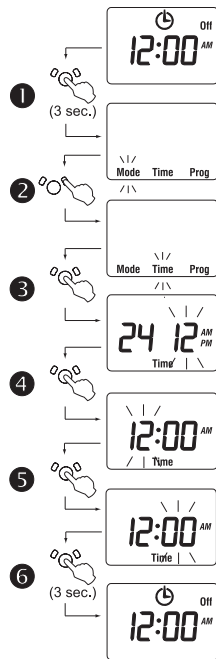
NOTE: Ensure that the timer is positioned such that the light sensor is pointing to an area that is undisturbed by car lights, outdoor lights, etc.

4.6 Temporary Override

You can press the **On/Off** button at any time to apply or cut power to the appliance. If you derogate from the state in which the timer is supposed to be, the new state (On or Off) will flash to show that it is temporary. The override remains in effect until you press the **On/Off** button or until the start of the next on or Off time.

5 Setting the Clock

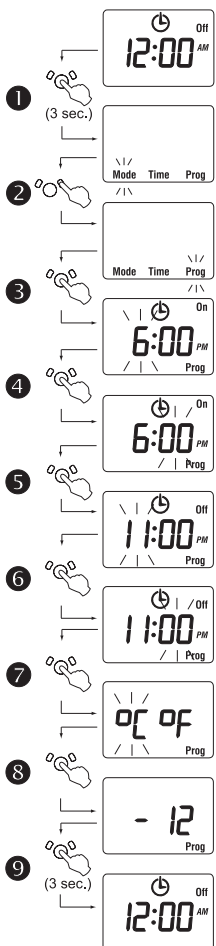
- 1 Hold the **On/Off** button for 3 seconds to enter the menu.
- 2 Press the **▶** button once. The **Time** menu will flash.
- 3 Press the **On/Off** button to display the time format options. The selected format will flash. Press the **◀** or **▶** button to switch format.
- 4 Press the **On/Off** button. The hour setting will flash. Press the **◀** or **▶** button to set the hour.
- 5 Press the **On/Off** button. The minutes setting will flash. Press the **◀** or **▶** button to set the minutes.
- 6 Hold the **On/Off** button any time for 3 seconds to exit the menu.



NOTE: The timer automatically returns to its normal display if you do not press any button for 60 seconds.

6 Setting the Program and Temperature

- 1 Hold the **On/Off** button for 3 seconds to enter the menu.
- 2 Press the **▶** button twice. The **Prog** menu will flash.
- 3 Press the **On/Off** button. The hour setting will flash. Press the **◀** or **▶** button to set the hour for the program start time.
- 4 Press the **On/Off** button. The minutes setting will flash. Press the **◀** or **▶** button to set the minutes for the program start time.
- 5 Press the **On/Off** button. The hour setting will flash. Press the **◀** or **▶** button to set the hour for the program end time.
- 6 Press the **On/Off** button. The minutes setting will flash. Press the **◀** or **▶** button to set the minutes for the program end time.
- 7 Press the **On/Off** button to display the temperature format options. The selected format will flash. Press the **◀** or **▶** button to switch format.
- 8 Press the **On/Off** button to display the temperature threshold. Press the **◀** or **▶** button to display the desired threshold.
- 9 Hold the **On/Off** button any time for 3 seconds to exit the menu.



NOTE: The timer automatically returns to its normal display if you do not press any button for 60 seconds.

7 Testing the Light Sensor

To test if the light sensor is working properly:

- 1 Place the timer in automatic mode with darkness threshold or in sunset/sunrise mode.
- 2 Position the timer such that it be exposed to daylight.
- 3 Check that the ☾ icon flashes to indicate the sensor has detected light.
- 4 Place your finger on the sensor.
- 5 Check that the icon stops flashing after approximately 40 seconds to indicate the sensor has not detected light.
- 6 Remove your finger.
- 7 Check that the icon resumes flashing after approximately 40 seconds.

8 Reset to Factory Settings

To return to factory settings, simultaneously press both **On/Off** and **◀** buttons and hold. The software version will appear for 5 seconds. **RST** will appear for the next 5 seconds. Release the buttons only when all segments appear on the screen. The timer is now reset.



9 Power Outage

During a power outage, the screen is blank. If the outage lasts more than 4 hours (at 25 °C / 77 °F), when power will be back, the clock will be reset (0:00) and will start ticking again. Therefore, the timer can still apply or cut power to the controlled appliance, however the on/off times will be shifted.

10 Technical Specifications

Supply: 120 VAC, 60 Hz

Maximum load: 15 amps, 1 HP

Operating temperature: -40 to 50 °C (-40 to 122 °F) [NOTE: The display is illegible below -20°C (-4°F)]

Charging time: minimum of 8 hours

Data protection: Most settings are saved at all times. Only the clock must be set if the timer was without power for more than 4 hours (at 25 °C / 77 °F).

Program: 1 on setting and 1 off setting. The same settings are repeated every day.

Approval: UL (c UL us)

Warranty

AUBE warrants this product, excluding battery, to be free from defects in the workmanship or materials, under normal use and service, for a period of three (3) years from the date of purchase by the consumer. If at any time during the warranty period the product is determined to be defective or malfunctions, AUBE shall repair or replace it (at AUBE's option).

If the product is defective,

- return it, with a bill of sale or other dated proof of purchase, to the place from which you purchased it, or
- contact AUBE. AUBE will make the determination whether the product should be returned, or whether a replacement product can be sent to you.

This warranty does not cover removal or reinstallation costs. This warranty shall not apply if it is shown by AUBE that the defect or malfunction was caused by damage which occurred while the product was in the possession of a consumer.

AUBE's sole responsibility shall be to repair or replace the product within the terms stated above. AUBE SHALL NOT BE LIABLE FOR ANY LOSS OR DAMAGE OF ANY KIND, INCLUDING ANY INCIDENTAL OR CONSEQUENTIAL DAMAGES RESULTING, DIRECTLY OR INDIRECTLY, FROM ANY BREACH OF ANY WARRANTY, EXPRESS OR IMPLIED, OR ANY OTHER FAILURE OF THIS PRODUCT. Some provinces, states or regions do not allow the exclusion or limitation of incidental or consequential damages, so this limitation may not apply to you.

THIS WARRANTY IS THE ONLY EXPRESS WARRANTY AUBE MAKES ON THIS PRODUCT. THE DURATION OF ANY IMPLIED WARRANTIES, INCLUDING THE WARRANTIES OF MERCHANTABILITY AND FITNESS FOR A PARTICULAR PURPOSE, IS HEREBY LIMITED TO THE THREE-YEAR DURATION OF THIS WARRANTY. Some provinces, states or regions do not allow limitations on how long an implied warranty lasts, so the above limitation may not apply to you.

This warranty gives you specific legal rights, and you may have other rights which vary from one province, state or region to another.

Technical Assistance

705 Montrichard Avenue
Saint-Jean-sur-Richelieu, Quebec
J2X 5K8
Canada

Tel.: (450) 358-4600

Toll-free: 1-800-831-AUBE

Fax: (450) 358-4650

Email: aube.service@honeywell.com



For more information on our products, go to
www.aubetech.com